

pouchmanTM4PQ

ID-Laminator

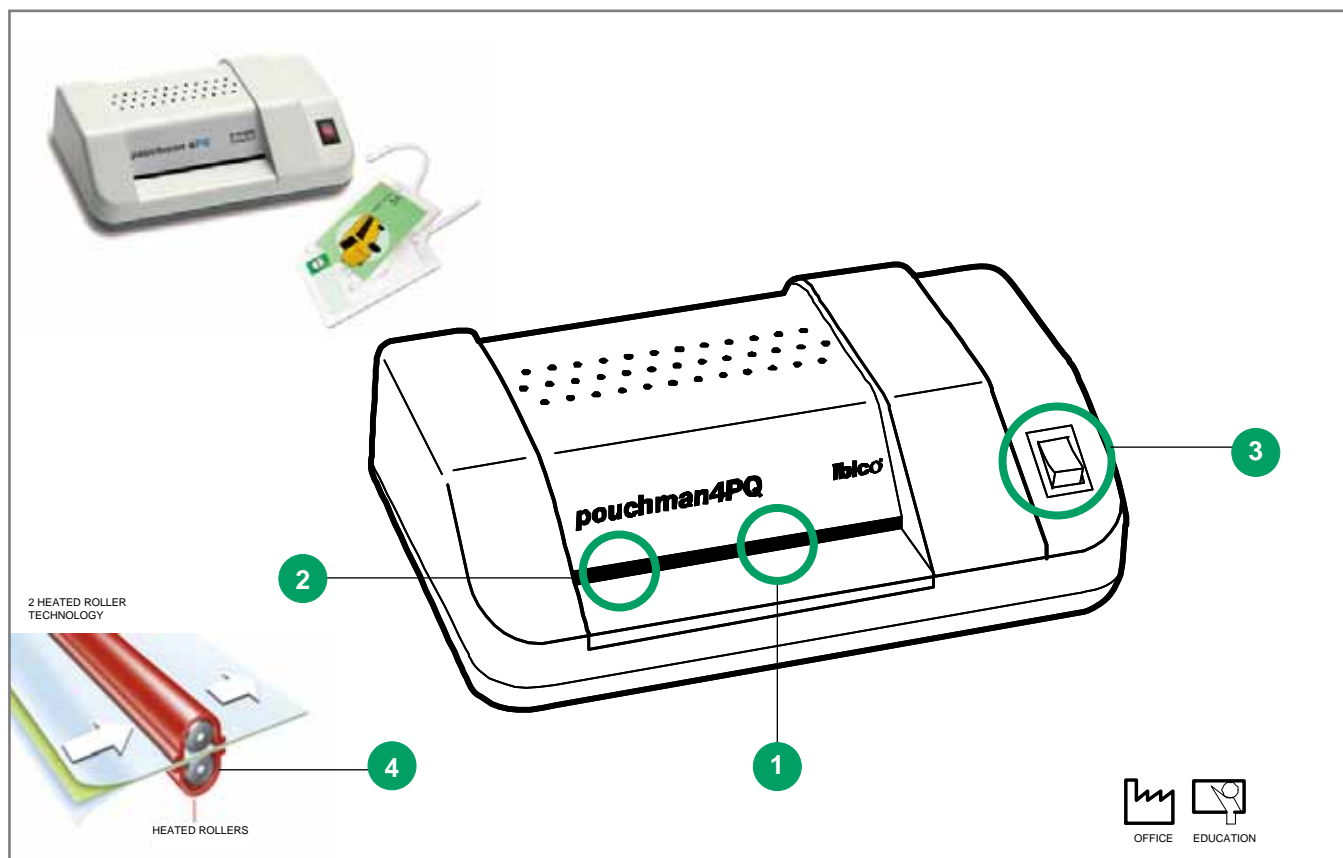
- Lamination width* **A7 Max** (112 mm)
- Pouch capability – 80, 100, 125 Micron (**250 Total**)
- Carrier-free performance
- Fixed 'Hot' + 'Cold' settings
- Up to 202 Credit Cards per hour capacity

Designed specifically for the Card! And simple to use!
Ideal for Badges, Identity Cards, Luggage Tags, Security Passes, Reference Cards; Visitor Cards....and anything else that does not exceed the 112 mm throat width.

Features & Benefits

- 1 Up to 202 Credit Cards per hour capacity
- 2 Photo Quality
- 3 Ready Light
- 4 Heated Roller technology

* Lamination Width is the maximum insert width



Technical Specifications

Photo quality	Yes
Heat-up Time (75 mic)	3 min.
Speed mm/min.	290
Time to laminate 1 credit card	18 sec.
Temperature control	Hot
Cold Lamination	-
Speed control	Fixed
Rollers	2
Max. Document size	A7
Max. pouch thickness	2x125 Micron (250 Total)
Ready Lamp	Yes
Ready Light	Yes

Release Function	-
Reverse	-
Display	-
Pouch counter	-
Auto switch off	-
High Speed Pouches Laminates / hr*	No
Warranty	2 years
Dimensions	216x 155x92
Certification	GS / TÜV / CE
Weight	1.116 kg
Power Consumption Watts / Amps	700W/1.3A

Product Codes:

EU IB508219
UK IB508202



www.gbceurope.com